

We are dedicated to providing you convenient and compassionate care. If you have any questions about your PET/CT bone scan or need additional information about any of our services, please contact us:



Your Appointment

Date:

Time:

If you are unable to keep this appointment, please call our office at least 24 hours in advance.

PET/CT Bone Scan

A Patient's Guide

What is a PET/CT Bone Scan?

PET/CT is a powerful tool that can provide valuable information to help your physician diagnose health concerns, determine the extent of disease, prescribe treatment and monitor therapy progress. PET/CT actually combines two imaging techniques: a positron emission tomography (PET) scan that shows your body's physiologic changes, and a computed tomography (CT) scan that shows the structure of your anatomy where the changes are taking place. Together, these two images provide highly sophisticated information to your physicians about the presence or spread of disease and accurately identify its precise location.

During a bone scan, the PET/CT system scans your entire skeletal system and produces high-resolution images of your bones. These images are used to detect areas of abnormal bone growth associated with tumors.

Preparation

A PET/CT bone scan is fast, straightforward and painless. There is no special preparation prior to having a bone scan. You may eat and drink normally and take prescribed medications as usual, unless otherwise instructed. Below is an overview of what to expect when you arrive at the imaging center for your scan:

Registration

Once you have checked in, one of our technologists will escort you back to the imaging area to collect your medical history.

Tracer Injection

You will receive an intravenous injection of a radioactive tracer, which will leave your body naturally through your bladder.

Relax

As you rest for approximately one hour, the tracer will circulate throughout your body.

Scan

You will lie on a bed for your scan, which will take less than 30 minutes. You will feel the bed move slowly through the PET/CT scanner opening, first taking a CT scan, followed by a PET scan. Our technologist will instruct and keep you informed during the entire examination. Since movement of the body while the pictures are being taken may require the scan to be repeated, you should remain as still as possible and breathe normally, unless advised otherwise.

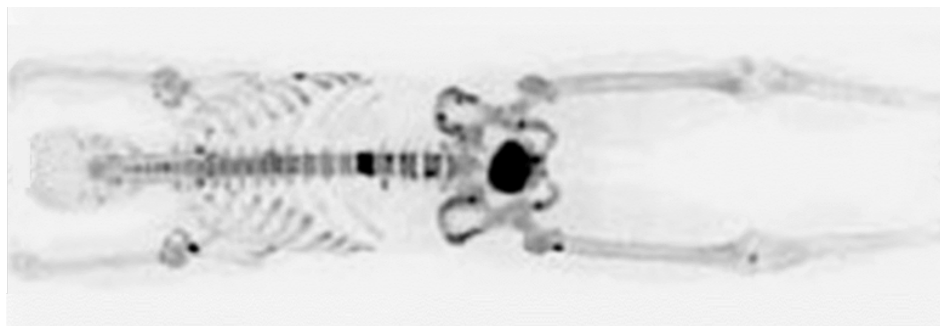


Image courtesy of Seattle Nuclear Medicine, Seattle, Washington, USA

Following the Scan

Once the scan is complete, you can relax while the technologist processes the images. After you are discharged, you may resume normal activities immediately, unless you have received other instructions from your physician. Over the next few hours, the small amount of radioactive tracer administered to you will break down naturally and leave your body. To help clear this tracer more rapidly, drink as much fluid as possible for the remainder of the day, and empty your bladder frequently, unless otherwise instructed by your physician.

A specialist will interpret the images produced by your PET/CT scan. The final results will be reported to your physician, usually within 48 hours.